

DOI: 10.22034/ijon.2023.2007968.1025

Research Article

Abundance and distribution of nematodes in petroleum hydrocarbons polluted soils in Okrika Local Government Area, Rivers State, Nigeria

LeBari Barine Gboeloh^{1✉}, Comfort Mina Amakiri¹, and Roseline Ogechi Ofuru²

1. Department of Biology, Ignatius Ajuru University of Education, Port Harcourt, Rivers State, Nigeria

2. Rivers State University, Nkporlu, Port Harcourt, Rivers State, Nigeria

✉Corresponding Author E-mail: lgboeloh@yahoo.com, lebari.gboeloh@iaue.edu.ng

Received: 2025/09/11 Revised: 2025/10/31 Accepted: 2025/11/03

Abstract

This study examined the abundance of nematodes in petroleum hydrocarbons polluted soils in Okrika region. A total of 80 soil samples were collected at various depths in several sites of the region during the dry and rainy seasons. Three of the sites (Ekerekana, Ogoloma and Okari) were polluted by petroleum hydrocarbons while the control (Abam) was unpolluted. A total of 15 genera containing 749 individual nematodes were extracted from both polluted and unpolluted sites. The highest abundance was recorded at the control site, Abam with 327 (43.7%), followed by Ekerekana with 272 (36.3%), Ogoloma with 97 (12.9%) and Okari with 53 (7.1%) nematodes. In comparison to the dry season, more nematodes, 561 (74.9% out of total population) individuals were extracted during the wet season. During the wet season, nematode abundance was considerably higher ($p < 0.05$) in the unpolluted site than those in polluted sites, but during the dry season, there was no significant difference ($p > 0.05$) between the polluted and unpolluted sites. Similarly, more nematodes (51.3%) were extracted from the core depth of 0-5 cm than 6-10 cm (33.2%) and 11-15 cm (15.5%). At the depth of 0-5 cm, the control site had a significant ($p < 0.05$) nematode abundance than the polluted sites while at the depths of 6-10 cm and 11-16 cm, although there was a higher numerical abundance of nematodes in the polluted sites than the control site, but these were not significant ($p > 0.05$). This study showed that nematodes at the studied sites were relatively sensitive to petroleum hydrocarbons pollution especially at the depth of 0-5 cm in both dry and rainy seasons.

Keywords: Abundance, hydrocarbon, nematodes, pollution

How to cite: Gboeloh, L. B., Amakiri, C.M. & Ofuru, R. O. 2025. Abundance and distribution of nematodes in petroleum hydrocarbons polluted soils in Okrika Local Government Area, Rivers State, Nigeria. *Iranian J. of Nematology* 1(2), 183-195.

فراوانی و انتشار نماتدها در خاک‌های آلوده به هیدروکربن‌های نفتی در منطقه دولت محلی اوکریکا استان ریورز، نیجریه

لوباری بارین بلوه[✉]، کومفورت مینا آماکری^۱ و روزالین اوچی اوفورو^۲

۱. بخش زیست شناسی، دانشگاه ایگنتیوس آجورو، استان ریورز، نیجریه

۲. بخش زیست شناسی، دانشگاه دولتی ریورز، نکپورلو، بندر هارکورت، استان ریورز، نیجریه

✉ پست الکترونیکی مسئول مکاتبات: lgboeloh@yahoo.com, lebari.gboeloh@iaue.edu.ng

دریافت: ۱۴۰۴/۰۶/۲۰ بازنگری: ۱۴۰۴/۰۸/۰۹ پذیرش: ۱۴۰۴/۰۸/۱۲

چکیده

در این مطالعه فراوانی نماتدها در خاک‌های آلوده به هیدروکربن‌های نفتی در منطقه اوکریکا بررسی شد. در مجموع تعداد ۸۰ نمونه خاک از اعماق مختلف و در فصول خشک و بارانی از چندین مکان در منطقه مورد بررسی جمع‌آوری شد. سه مکان شامل اکریکانا، اوگولوما و اوکاری با آلودگی به هیدروکربن‌های نفتی و یک مکان با نام آلام فاقد آلودگی به عنوان شاهد انتخاب شدند. در کل تعداد ۱۵ جنس شامل ۷۴۹ فرد نماتد از هر دو مکان‌های آلوده و غیرآلوده استخراج شدند. بیشترین فراوانی نماتد برای مکان شاهد غیرآلوده یعنی آلام با ۳۲۷ نماتد (۰.۴۳/۷٪) ثبت شد و باقی مکان‌ها اکریکانا، اوگولوما و اوکاری به ترتیب دارای ۲۷۲ (۰.۳۶/۳٪)، ۹۷ (۰.۱۲/۹٪) و ۵۳ (۰.۷/۱٪) فرد نماتد بودند. در مقایسه با فصل خشک، ۷۴/۹٪ نماتدها یعنی ۵۶۱ فرد نماتد در فصل مرطوب و بارانی به دست آمد. در طول فصل بارانی فراوانی نماتدها به‌طور قابل ملاحظه‌ای در مکان غیرآلوده بالاتر ($p > 0.05$) از مکان‌های آلوده بود، در حالی‌که در طول فصل خشک تفاوت معنی‌داری ($p > 0.05$) بین مکان‌های آلوده و غیرآلوده وجود نداشت. از نظر عمق نمونه‌برداری، تعداد نماتدها در عمق صفر تا ۵ سانتی‌متری خاک (۰.۵۱/۳٪) بیشتر از عمق ۶-۱۰ (۰.۳۳/۲٪) و ۱۱-۱۵ (۰.۱۵/۵٪) سانتی‌متر بود. مکان غیرآلوده دارای فراوانی معنی‌دار نماتد ($p > 0.05$) در عمق صفر تا پنج سانتی‌متری در مقایسه با مکان‌های آلوده بود، در حالی‌که در عمق‌های ۶-۱۰ و ۱۱-۱۵ سانتی‌متری گرچه تعداد نماتدها در مکان‌های آلوده بیشتر از مکان شاهد بود ولی این تفاوت در سطح پنج درصد معنی‌دار نبود. نتایج این مطالعه نشان داد که نماتدها در مکان‌های بررسی شده به ویژه در عمق صفر تا پنج سانتی‌متری در هر دو فصل خشک و بارانی به آلودگی با هیدروکربن نفتی نسبتاً حساس بودند.

واژه‌های کلیدی: آلودگی، فراوانی، نماتدها، هیدروکربن

Introduction

Among the most valuable resources, soil serves as a means of providing food for plants as well as habitat for edaphic organisms. It provides home for several life forms including bacteria, fungi, algae, protozoa, arthropods and nematodes. Soil also drives and boosts numerous biogeochemical processes that sustain the ecosystem (Wagg *et al.* 2014; Brussard *et al.* 1997). The presence and activities of these organisms in addition to the physicochemical properties of the soil influence the ecological health of the soil. A healthy soil is able to support ecological yield, quality of environment and to encourage animal and plant health (Weil and Magloff 2004; Bileva *et al.* 2013; Osarokaka *et al.* 2021).

One of the most important faunas in edaphic food web is the nematodes community which are group of invertebrate animals that exist in parasitic, predatory and free-living life styles. They are found in the soil, marine and fresh water habitats (McSorley 2003; Brussard *et al.* 1997). The free-living forms are especially important in the improvement of soil vitality through the decomposition of organic matters needed for plant growth and productivity (Neher 2001a). In essence, the diversity, abundance and distribution of soil nematodes are major factors in assessment of the integrity of the soil (Osarokaka *et al.* 2021; Visser and Parkinson 1992). Using their trophic traits, soil nematodes are divided into five major groups: bacterial feeders, omnivores, plant feeders, predators, and fungi feeders (Yeates *et al.* 1993). Nematodes can also be categorized into five groups based on a colonizer-persister (cp) scale which takes into consideration the characteristics of their lifecycle and sensitivity to agitation (Bongers 1990). The scale, according to Chauvin *et al.* (2020), ranges from cp1-opportunistic feeders with a fast generation time and a high reproduction rate up to cp5- persisters with a lengthy life time, a little reproduction rate, and more sensitivity to ecological agitations. According to Bongers (1998), functional guilds are described using a mix of the cp scale and feeding preferences. These traits can be utilized to create indicators that can be used to examine the community structure of nematodes (Ferris 2010) and any alterations brought on by environmental disturbance (Pen-Mouratov *et al.* 2004).

Anthropogenic activities such as farming, construction and mining resulting into environmental

pollution may alter the richness, diversity and distribution of soil nematodes (Chauvin *et al.* 2020). Although several techniques have been adopted in determination of soil integrity (Cortet *et al.* 1999; Edwards 2002; Cadwell 2005), the biological approach of using nematode communities as bioindicators for assessing ecological disturbances, especially heavy metal pollution has been very effective (Bonger and Ferris 1999; Neher 2001a; Georgiera *et al.* 2002). Nematodes are known to be very sensitive to minor alteration in the physico-chemical properties of the soil (Moura and Franzener, 2017; Osarokaka *et al.* 2021), including oil spills, leakages and radiation (Beyrem *et al.* 2010; Wei *et al.* 2012). In addition to having this characteristic, the fact that nematodes can easily be extracted from the soil enhancing their usage as bioindicators of environmental pollution (Ferris and Matute 2003).

Numerous studies have documented nematodes' great sensitivity to contamination of the ecosystem by heavy metals resulting in alteration of nematode composition, distribution and abundance (Shukurov *et al.* 2005; Sanchez and Navas 2007; Osarokaka *et al.* 2021; Nzeako *et al.* 2011; Pen-Mouratov *et al.* 2011; Briar *et al.* 2012; Zhang *et al.* 2012) and according to Chauvin *et al.* (2020), the most impacted nematode communities are those classified as cp4 and cp5. The effects of heavy metal pollution on the edaphic ecology impact negatively on the functionality of the soil resulting in poor respiration and nutrient cycling (Komulainen and Mikola, 1993; Kandeler *et al.* 1996). Crude oil pollution has reportedly caused the soil pores to become clogged, which hinders physical processes including capillarity, aeration and drainage leading to an increase in bulk density. Trophic diversity, genus count and the amount of time spent on petroleum exploration in oil fields are all negatively correlated, which has aggressive influence on the community composition of soil nematodes (Wang *et al.* 2009; Savin *et al.* 2015).

The Niger Delta of Nigeria is endemically characterized by incessant crude oil pollution either due to equipment failure or sabotage (Nzeako *et al.* 2011; Osarokaka *et al.* 2021), with its resultant impact on the ecosystem and biodiversity (Zhang *et al.* 2012; Nzeako *et al.* 2011; Osarokaka *et al.* 2021).

Okrika is an oil producing area located on latitude 4° 44' 26'' N and longitude 7° 5' 5'' with an elevation of

6.028 meters on the north of the Bonny River. The area has an estimated population of 222,026 (Anonymous 2006). Fishing is the major occupation of the aborigines; however, crude oil exploration has become the major strength of the economy of the area, with its consequent pollution of the ecosystem. The research area, which has a mean daily temperature of 18°C, a wind speed of 5 km/h, and a relative humidity of 95%, is essentially a mangrove ecosystem. The annual rainfall ranges from 3500 to 4000 mm and majority of the rainy season occurs between June and September (Chukwumati and Asiegbu 2023).

The aims of this study were to; *i*: assess the effect of hydrocarbon pollution on the abundance and distribution of soil nematodes in petroleum crude oil impacted sites in Okrika Local Government Area, Rivers State, Nigeria. *ii*: provides data on edaphic biodiversity in relation to nematodes as a results of petroleum hydrocarbon pollution and add value to similar studies conducted in this area.

Materials and methods

Study Area

The study was conducted in Okrika Local Government Area, Rivers State (Fig. 1). Four major sites were randomly selected for this study. The sites were selected based on confirmed observation that there is active presence of illegal refining activities, popularly known as “kpo-fire” among Niger Deltans. The sites were designated as A, B, C and D representing Ekerekana (Latitude 4°45'0.53''N, Longitude 7°5'59.64''E), Ogoloma (Latitude 4°44'42.93''N, Longitude 7°5'59.64''E), Okari (Latitude 4°44'19.97''N, Longitude 7°5'52.51''E) and Abam (Latitude 4°45'42.17''N, Longitude 7° 5'6.93''E), respectively. Site D (Abam) served as the control, where there was no hydrocarbon pollution.

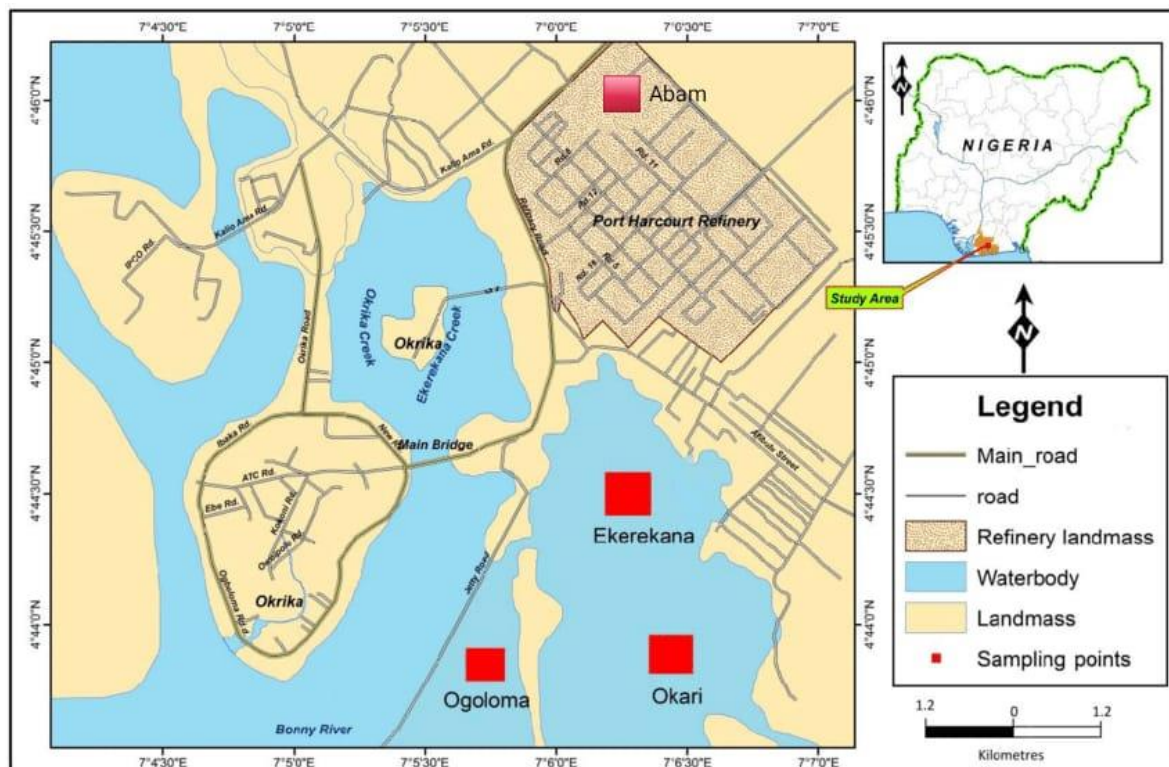


Fig. 1: Map of Okrika LGA showing sampling sites (in red).

Sample collection

A calibrated soil corer was used to randomly collect soil samples, at a vertical depth range of 0-15 cm from the various sites, including the control. Eighty (80) soil

samples (20 samples from each location) were collected at depths of 0-5 cm, 6-10 cm, and 11-15 cm and placed in labeled black polythene bags, kept in a cooler with ice bags and brought to the research facility of Ignatius Ajuru

University of Education, Port Harcourt for laboratory analysis. The samples were collected both in the wet season (May-September) and in the dry season (October-April). The collection of samples was done between May, 2022 and April, 2023.

Laboratory analysis

The sieving centrifugal floatation techniques by Kleynhans (1997) was adopted for nematode extraction from the soil and the nematodes were identified to the genus level using the methods of Yeates *et al.* (1993) and Hooper *et al.* (2005). Shape of stylet knobs, head, pointed or knobbed tail, length of spicule and its shape, length of the body, absence or presence of spermatheca and length of stylet were some of the criteria used to identify nematodes.

Statistical analysis

The association between the nematode population densities with communities at various sites was examined using Spearman's correlation coefficient. To examine the significance, statistical correlations at the level of $P > 0.05$ was used.

Results and Discussion

Overall nematode abundance and distribution

The results indicated that an overall abundance of nematode population densities were 749 individual nematodes belonging to 15 genera which were extracted at various depth from the selected sites in both dry and rainy seasons. The highest abundance was recorded at the control site, Abam with 327 nematode density (43.7%), followed by Ekerekana with 272 (36.3%), Ogoloma with 97 (12.9%) and Okari with 53 (7.1%) nematode densities (Fig. 2). There was a statistically significant difference in nematode frequency between the different locations with ($\mu = 9.305$, $df=3$, $p=0.025$) with mean ranks of 20.92, 21.75, 17.83 and 7.79 for Abam (control), Ekerekana, Ogoloma and Okari, respectively. Abam (control) had no significant difference in nematode abundance from Ekerekana ($\mu=56$, $p=0.791$) and Ogoloma ($\mu = 30.5$, $p=0.605$) but had a significant difference with Okari ($\mu = 8.5$, $p=0.003$). Ekerekana also showed no significant difference with Ogoloma ($\mu = 25$, $p=0.586$).

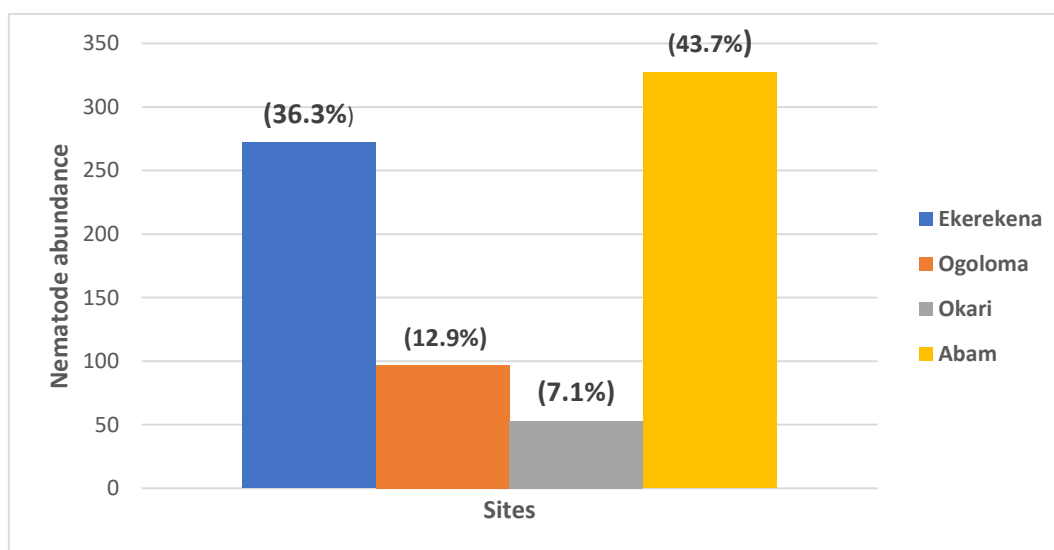


Fig. 2: Overall abundance of nematodes in the studied areas

Nematode richness and distribution in relation to seasonal variation

The total number of the nematodes recorded were 749 out of which 561 (74.9%) and 188 (25.1%) were extracted in the wet and dry seasons, respectively. In the rainy season, a total of 199 (26.57%), 85 (11.35%), 40 (5.34%) and 237 (31.64%) nematodes were extracted

from Ekerekana, Ogoloma, Okari and Abam, respectively; while in the dry season, a total of 73 (9.75%), 12 (1.60%), 13 (1.74%) and 90 (12.01%) of nematodes were identified from Ekerekana, Ogoloma, Okari and Abam, respectively (Table 1).

Nematode abundance and distribution in relation to nematode population density

A total of 749 individual nematodes belonging to 15 genera were extracted from the studied sites and identified. The nematode genera were *Hirschmanniela* spp., *Pratylenchus* spp., *Gracilacus* spp., *Tylenchorhynchus* spp., *Trichodorus* spp., *Aphelenchus* spp., *Longidorus* spp., *Hemicycliophora* spp., *Dolichodorus* spp., *Ditylenchus* spp., *Helicotylenchus* spp., *Xiphinema* spp., *Rotylenchus* spp., *Paratylenchus* spp. and *Rhabditis* spp. (Table 1). *Pratylenchus* spp. with

a number of 154 (20.56%) individuals was the most abundant nematode genus, followed by *Hirschmanniela* spp. 145 (19.36%), *Gracilacus* spp. 86 (11.48%), *Tylenchorhynchus* spp. 55 (7.34%), *Trichodorus* spp. 55 (7.34%), *Hemicycliophora* spp. 52 (6.94%), *Longidorus* spp. 34 (4.54%), *Xiphinema* spp. 30 (4.01%), *Ditylenchus* spp. 29 (3.87%), *Helicotylenchus* spp. 26 (3.47%), *Aphelenchus* spp. 19 (2.54%), *Rotylenchus* spp. 18 (2.40%), *Dolichodorus* spp. 17 (2.27%), *Rhabditis* spp. 17 (2.27%) and *Paratylenchus* spp. 12 (1.60%).

Table 1: Nematode abundance and distribution (%) in polluted and petroleum free area of Okrika region

Nematode Genera	Abam (Control)		Ekerekana (Polluted)		Ogoloma (Polluted)		Okari (Polluted)		Total
	Nematode Abundance (%)								
	Rainy	Dry	Rainy	Dry	Rainy	Dry	Rainy	Dry	
<i>Hirschmanniela</i> spp.	52 (35.85)	0 (0)	46 (31.72)	16 (11.03)	19 (13.10)	0 (0)	7 (4.83)	5 (3.45)	145 (19.36)
<i>Pratylenchus</i> spp.	40 (25.97)	33 (21.42)	32 (20.78)	9 (5.84)	22 (14.29)	5 (3.25)	9 (5.84)	4 (2.60)	154 (20.56)
<i>Gracilacus</i> spp.	31 (36.05)	0 (0)	17 (19.77)	4 (4.65)	25 (29.07)	0 (0)	6 (6.98)	3 (3.49)	86 (11.48)
<i>Tylenchorhynchus</i> spp.	13 (23.64)	13 (23.64)	25 (45.45)	0 (0)	4 (7.27)	0 (0)	0 (0)	0 (0)	55 (7.34)
<i>Trichodorus</i> spp.	19 (34.55)	0 (0)	22 (40)	2 (3.64)	12 (21.82)	0 (0)	0 (0)	0 (0)	55 (7.34)
<i>Aphelenchus</i> spp.	3 (15.79)	3 (15.79)	2 (10.52)	0 (0)	3 (15.79)	0 (0)	7 (36.84)	1 (5.26)	19 (2.54)
<i>Longidorus</i> spp.	0 (0)	0 (0)	17 (50)	17 (50)	0 (0)	0 (0)	0 (0)	0 (0)	34 (4.54)
<i>Hemicycliophora</i> spp.	12 (23.08)	7 (13.46)	11 (21.15)	11 (21.15)	0 (0)	7 (13.46)	4 (7.69)	0 (0)	52 (6.94)
<i>Dolichodorus</i> spp.	0 (0)	0 (0)	10 (58.82)	7 (41.18)	0 (0)	0 (0)	0 (0)	0 (0)	17 (2.27)
<i>Ditylenchus</i> spp.	0 (0)	0 (0)	17 (58.62)	7 (24.14)	0 (0)	0 (0)	5 (17.24)	0 (0)	29 (3.87)
<i>Helicotylenchus</i> spp.	12 (46.15)	12 (46.15)	0 (0)	0 (0)	0 (0)	0 (0)	2 (7.69)	0 (0)	26 (3.47)
<i>Xiphinema</i> spp.	22 (73.33)	8 (26.67)	0 (0)	0 (0)	0 (0)	0 (0)	0 (0)	0 (0)	30 (4.01)
<i>Rotylenchus</i> spp.	9 (50)	9 (50)	0 (0)	0 (0)	0 (0)	0 (0)	0 (0)	0 (0)	18 (2.40)
<i>Paratylenchus</i> spp.	7 (58.33)	5 (41.67)	0 (0)	0 (0)	0 (0)	0 (0)	0 (0)	0 (0)	12 (1.60)
<i>Rhabditis</i> spp.	17 (100)	0 (0)	0 (0)	0 (0)	0 (0)	0 (0)	0 (0)	0 (0)	17 (2.27)
Grand total	237 (31.64)	90 (12.01)	199 (26.57)	73 (9.75)	85 (11.35)	12 (1.60)	40 (5.34)	13 (1.74)	749

Nematode abundance and distribution in relation to seasonal variation

The results of the study indicated that seasonal variation influences the abundance and distribution of nematodes in both the control and polluted sites. During the rainy season, a total of 561 (74.9%) nematode density were recorded while 188 (25.1%) extracted during the dry season. Further analysis of the results showed that during the rainy season, 237 (42.2%), 199 (35.5%), 85 (15.2%) and 40 (7.1%) density of nematodes were extracted from Abam (control), Ekerekana, Ogoloma and

Okari, respectively. While during the dry season, 90 (47.9%), 73 (38.8%), 12 (6.4%) and 13 (6.9%) nematodes were recorded in Abam (control), Ekerekana, Ogoloma and Okari, respectively (Table 2). There was no significant difference in the distribution of nematodes across the various locations during the dry season. Analysis of the results between the locations showed $\mu^2=6.409$, $df=3$, $p=0.093$ with mean ranks of 13.94, 13.00, 9.75, 4.50 for Abam (control), Ekerekana, Ogoloma and Okari, respectively.

Table 2: Nematode abundance and distribution in relation to seasonal variation

Sites/Location	Nematode Abundance (%)		
	Rainy Season	Dry season	Total
Abam (Control)	237 (42.2)	90 (47.9)	327 (43.7)
Ekerekana	199 (35.5)	73 (38.8)	272 (36.2)
Ogoloma	85 (15.2)	12 (6.4)	97 (13.0)
Okari	40 (7.1)	13 (6.9)	53 (7.1)
Total	561 (74.9)	188 (25.1)	749

Nematode abundance in relation to core depths of soil

In Table 3 nematode abundance and distribution at various depth in both the polluted and control sites during the rainy and dry seasons are shown. The results indicated that out of 561 nematode individuals extracted from all the sites during the rainy season, a total of 288 (51.3%), 186 (33.2%) and 87 (15.5%) were extracted from the core depths of 0-5 cm, 6-10 cm and 11-15 cm, respectively while during the dry season, out of a total of 188 nematode densities recorded from all the sites, 120 (63.8%), 46 (24.5%) and 22 (11.7%) were recovered from the depth of 0-5 cm, 6-10 cm and 11-15 cm, respectively (Table 4).

During the rainy season, out of the 288 individual nematodes extracted from the depth of 0-5 cm, a total of 123 (51.9%), 97 (48.7%), 41 (48.2%) and 27 (67.5%) were recorded from Abam(control), Ekerekana, Ogoloma and Okari regions, respectively. At the core depth of 6-10 cm, out of the 186 nematodes extracted, 79 (33.3%), 65 (32.7%), 33 (38.8%) and 9 (22.5%) were recorded from Abam(control), Ekerekana, Ogoloma and

Okari, respectively, while at a depth of 11-15 cm, out of 87 nematodes extracted, a total of 35 (27.6%), 37 (18.6%), 11 (12.9%) and 4 (10%) were from Abam(control), Ekerekana, Ogoloma and Okari, respectively.

During the dry season, at a core depth of 0-5 cm, out of the 120 extracted nematodes, 54 (60.0%), 48 (65.8%), 9 (75.0%) and 9 (69.2%) were from Abam(control), Ekerekana, Ogoloma and Okari, respectively. At a depth of 6-10 cm, a total of 46 nematodes extracted, out of which 24 (26.7%), 15 (20.6%), 3 (25.0%) and 4 (30.8%) nematodes were recovered from Abam(control), Ekerekana, Ogoloma and Okari, respectively, while at a depth of 11-15 cm, no nematode was recovered from Ogoloma and Okari but a total of 12 (13.3%) and 10 (13.7%) were extracted from Abam (Control) and Ekerekana, respectively (Table 4).

Table 3: Nematode abundance (%) in relation to depths of soil during the wet (rainy) season

Nematode genera	Rainy Season															
	Abam (Control)				Ekerekana (Polluted)				Ogoloma (Polluted)				Okari (Polluted)			
	0-5 cm	6-10 cm	11-15 cm	Total	0-5 cm	6-10 cm	11-15 cm	Total	0-5 cm	6-10 cm	11-15 cm	Total	0-5 cm	6-10 cm	11-15 cm	Total
<i>Hirschmanniella spp.</i>	23 (44.2)	20 (38.5)	9 (17.3)	52	20 (43.9)	14 (30.4)	12 (26.1)	46	10 (52.6)	7 (36.8)	2 (10.5)	19	5 (71.4)	1 (14.3)	1 (14.3)	7
<i>Pratylenchus spp.</i>	25 (62.5)	10 (25.0)	5 (12.5)	40	18 (56.3)	10 (31.3)	4 (12.5)	32	10 (45.5)	8 (36.4)	4 (18.2)	22	5 (55.5)	3 (33.3)	1 (11.1)	9
<i>Gracilacus spp.</i>	14 (45.2)	12 (38.7)	5 (16.1)	31	10 (58.8)	5 (29.41)	2 (11.76)	17	13 (52.0)	10 (40.0)	2 (8.0)	25	4 (66.7)	2 (33.3)	0 (0)	6
<i>Tylenchorhynchus spp.</i>	7 (53.9)	3 (23.1)	3 (23.1)	13	10 (40.0)	10 (40.0)	5 (20.0)	25	2 (50.0)	2 (50.0)	0 (0)	4	0 (0)	0 (0)	0 (0)	0
<i>Trichodorus spp.</i>	9 (47.4)	8 (42.1)	2 (10.5)	19	8 (36.4)	8 (36.6)	6 (27.3)	22	5 (41.7)	4 (33.3)	3 (25.0)	12	0 (0)	0 (0)	0 (0)	0
<i>Aphelenchus spp.</i>	3 (100)	0 (0)	0 (0)	3	2 (100)	0 (0)	0 (0)	2	1 (33.3)	2 (66.7)	0 (0)	3	5 (71.4)	0 (0)	2 (28.6)	7
<i>Longidorus spp.</i>	0 (0)	0 (0)	0 (0)	0	8 (47.1)	5 (29.4)	4 (23.5)	17	0 (0)	0 (0)	0 (0)	0	0 (0)	0 (0)	0 (0)	0
<i>Hemicycliophora spp.</i>	3 (25.0)	7 (58.3)	2 (16.7)	12	5 (45.5)	4 (36.4)	2 (23.5)	11	0 (0)	0 (0)	0 (0)	0	3 (75.0)	1 (25)	0 (0)	4
<i>Dolichodorus spp.</i>	0 (0)	0 (0)	0 (0)	0	6 (60.0)	4 (40.0)	0 (0)	10	0 (0)	0 (0)	0 (0)	0	0 (0)	0 (0)	0 (0)	0
<i>Ditylenchus spp.</i>	0 (0)	0 (0)	0 (0)	0	10 (58.8)	5 (29.4)	2 (11.8)	17	0 (0)	0 (0)	0 (0)	0	5 (100)	0 (0)	0 (0)	5
<i>Helicotylenchus spp.</i>	12 (100)	0 (0)	0 (0)	12	0 (0)	0 (0)	0 (0)	0	0 (0)	0 (0)	0 (0)	0	0 (0)	2 (100)	0 (0)	2
<i>Xiphinema spp.</i>	10 (45.5)	8 (36.4)	4 (18.2)	22	0 (0)	0 (0)	0 (0)	0	0 (0)	0 (0)	0 (0)	0	0 (0)	0 (0)	0 (0)	0
<i>Rotylenchus spp.</i>	6 (66.6)	3 (33.3)	0 (0)	9	0 (0)	0 (0)	0 (0)	0	0 (0)	0 (0)	0 (0)	0	0 (0)	0 (0)	0 (0)	0
<i>Paratylenchus spp.</i>	3 (42.9)	3 (42.9)	1 (14.3)	7	0 (0)	0 (0)	0 (0)	0	0 (0)	0 (0)	0 (0)	0	0 (0)	0 (0)	0 (0)	0
<i>Rhabditis spp.</i>	8 (47.4)	5 (29.4)	4 (23.5)	17	0 (0)	0 (0)	0 (0)	0	0 (0)	0 (0)	0 (0)	0	0 (0)	0 (0)	0 (0)	0
Total	123 (51.9)	79 (33.3)	35 (27.6)	237	97 (48.7)	65 (32.7)	37 (18.6)	199	41 (48.2)	33 (38.8)	11 (12.9)	85	27 (67.5)	9 (22.5)	4 (10)	40

Table 4: Nematode abundance (%) in relation to depths of soil during the dry season

Nematode genera	Dry Season															
	Abam (Control)				Ekerekana (Polluted)				Ogoloma (Polluted)				Okari (Polluted)			
	0-5 cm	6-10 cm	11-15 cm	Total	0-5 cm	6-10 cm	11-15 cm	Total	0-5 cm	6-10 cm	11-15 cm	Total	0-5 cm	6-10 cm	11-15 cm	Total
<i>Hirschmanniella</i> spp.	0 (0)	0 (0)	0 (0)	0	10 (62.5)	4 (25.0)	2 (12.5)	16	0 (0)	0 (0)	0 (0)	0	3 (38.5)	2 (40.0)	0 (0)	5
<i>Pratylenchus</i> spp.	22 (66.7)	6 (18.2)	5 (15.2)	33	9 (100)	0 (0)	0 (0)	9	5 (100)	0 (0)	0 (0)	5	4 (100)	0 (0)	0 (0)	4
<i>Gracilacus</i> spp.	0 (0)	0 (0)	0 (0)	0	4 (100)	0 (0)	0 (0)		0 (0)	0 (0)	0 (0)	0	2 (66.7)	1 (33.3)	0 (0)	3
<i>Tylenchorhynchus</i> spp.	8 (61.5)	5 (38.5)	0 (0)	13	0 (0)	0 (0)	0 (0)	0	0 (0)	0 (0)	0 (0)	0	0 (0)	0 (0)	0 (0)	0
<i>Trichodorus</i> spp.	0 (0)	0 (0)	0 (0)	0	2 (100)	0 (0)	0 (0)	2	0 (0)	0 (0)	0 (0)	0	0 (0)	0 (0)	0 (0)	0
<i>Aphelenchus</i> spp.	3 (100)	0 (0)	0 (0)	3					0 (0)	0 (0)	0 (0)	0	0 (0)	1 (100)	0 (0)	1
<i>Longidorus</i> spp.	0 (0)	0 (0)	0 (0)		5 (29.4)	7 (41.2)	5 (29.4)	17	0 (0)	0 (0)	0 (0)	0	0 (0)	0 (0)	0 (0)	0
<i>Hemicycliophora</i> spp.	0 (0)	7 (100)	0 (0)	7	5 (45.5)	3 (27.3)	3 (27.3)	11	4 (57.1)	3 (42.9)	0 (0)	7	0 (0)	0 (0)	0 (0)	0
<i>Dolichodorus</i> spp.	0 (0)	0 (0)	0 (0)	0	6 (85.7)	1 (14.3)	0 (0)	7	0 (0)	0 (0)	0 (0)	0	0 (0)	0 (0)	0 (0)	0
<i>Ditylenchus</i> spp.	0 (0)	0 (0)	0 (0)	0	7 (100)	0 (0)	0 (0)	7	0 (0)	0 (0)	0 (0)	0	0 (0)	0 (0)	0 (0)	0
<i>Helicotylenchus</i> spp.	12 (100)	0 (0)	0 (0)	12	0 (0)	0 (0)	0 (0)	0	0 (0)	0 (0)	0 (0)	0	0 (0)	0 (0)	0 (0)	0
<i>Xiphinema</i> spp.	3 (37.5)	3 (37.5)	2 (25.0)	8	0 (0)	0 (0)	0 (0)	0	0 (0)	0 (0)	0 (0)	0	0 (0)	0 (0)	0 (0)	0
<i>Rotylenchus</i> spp.	6 (66.7)	3 (33.3)	0 (0)	9	0 (0)	0 (0)	0 (0)	0	0 (0)	0 (0)	0 (0)	0	0 (0)	0 (0)	0 (0)	0
<i>Paratylenchus</i> spp.	0 (0)	0 (0)	5 (100)	5	0 (0)	0 (0)	0 (0)	0	0 (0)	0 (0)	0 (0)	0	0 (0)	0 (0)	0 (0)	0
<i>Rhabditis</i> spp.	0 (0)	0 (0)	0 (0)	0	0 (0)	0 (0)	0 (0)	0	0 (0)	0 (0)	0 (0)	0	0 (0)	0 (0)	0 (0)	0
Total	54 (60.0)	24 (26.7)	12 (13.3)	90	48 (65.8)	15 (20.6)	10 (13.7)	73	9 (75.0)	3 (25.0)	0 (0)	12	9 (69.2)	4 (30.8)	0 (0)	13

Nematodes are very sensitive to ecological disturbances and several studies have reported the use of nematodes as bioindicators of soil health (Bongers *et al.* 2001; Zhang *et al.* 2007; Chauvin *et al.* 2020; Nzeako *et al.* 2011; Neher, 2001b). In this study, the impact of crude oil pollution on the abundance and distribution of nematodes was analyzed. The results showed a significant variation in the abundance and distribution of nematodes between soils that have been contaminated by crude oil and uncontaminated soil (control). There was a high abundance and diversity of nematodes in the non-polluted soil than the polluted sites. Similar results were recorded in Bodo region by Osarokaka *et al.* (2021), Gokana Local Government area by Nzeako *et al.* (2011) and in a meta-analysis by Chauvin *et al.* (2020).

The variation in nematode abundance in the polluted and non-polluted sites could be attributed to the fact that the crude oil contains heavy metals and other contaminants to which the nematodes are sensitive. In addition, polycyclic aromatic hydrocarbons (PAHs), the main hazardous components of oil, are known to diminish biodiversity, cause genetic abnormalities, and impair ecosystem function (Veldkornet *et al.* 2020). Although, other meiofauna such as copepods may tolerate the pollutants because of their protective exoskeleton, nematodes are vulnerable to crude oil penetration because they have cuticles which allows passage of certain substances (Stringer *et al.* 2012).

The results of this study are also in consonance with the records of Lindgren *et al.* (2012), Lv *et al.* (2011) and Beyrem *et al.* (2010). The researchers discovered that when sediment was contaminated with lubricating oil, crude oil and diesel, nematode population and species richness are reduced. The variation in nematode abundance at various polluted sites as seen in our study could be the result of presence of multiple contaminants and complex nematode responses to the contaminants (Chauvin *et al.* 2020). For instance, Georgieva *et al.* (2002) reported that the additional zinc and copper in an already hydrocarbon polluted soil may impact nematode abundance negatively. The presence

of acidifying compounds concentration, type and bioavailability of the contaminants to the nematodes as well as duration of contact at the various sites may influence the results recorded at various polluted sites (Rodriguez-Martins *et al.* 2014; Clemente *et al.* 2003; Cappuyns *et al.* 2004; Ferris & Bongers, 2006; Chauvin *et al.* 2020).

Studies have shown that pollution decreases the population and species diversity of the most sensitive nematodes, which are usually the carnivores and omnivores (Salamun *et al.* 2012; Pen-Mouratov *et al.* 2008; Li *et al.* 2006). This might explain the reduced population density of nematodes in the polluted sites. Nematodes have been used extensively to evaluate medium- and long-term effects of metal pollution of soil (Bakonyi *et al.* 2003; Georgieva *et al.* 2002) and heavy metals have been demonstrated to affect both the diversity and abundance nematodes (Georgieva *et al.* 2002).

Generally, the reduced abundance and distribution of nematodes in the polluted sites is an indication of the presence of pollutants and poor soil quality. In our study, it was observed that nematode abundance decreased with depth. More nematode densities were extracted from the core depth of 0-5 cm than 6-10 cm and 11-16 cm at both polluted and unpolluted sites. Similar results were reported by Liu *et al.* (2022) in subalpine forests of China, Zhang *et al.* (2012) in the Chinese forest, Pen-Mouratov *et al.* (2008) in biological crust of Negev desert, Israel and Hu *et al.* (2020) in the North-western Negev desert in Israel and, Nzeako *et al.* (2019) at Makerere hill in Uganda. These observations may be attributed to the fact that the upper soil is always rich in nutrients and developed plant roots (Mitchel and Kangas, 2018). Several studies suggest that, to a greater extend, the abundance of nematode and other soil biota communities is directly proportional to the availability of essential nutrients, most of which are found at the top soil (Chu *et al.* 2016; Liu *et al.* 2017).

There was a significant variation in nematode abundance between the rainy and dry seasons. The rainy season yielded in more nematode count and

genera compared to the dry season. Similar observation was made by Thuo *et al.* (2020). This was expected as rainy season provides the soil with moisture necessary for the survival of the nematode community, and also helps in the circulation of nutrients in the soil. Most cysts of cyst-forming nematodes may hibernate during unfavorable conditions imposed by the dry season and emerge in the more favorable conditions provided by the rainy season, thereby contributing to the greater number of nematodes in the rainy season.

References

- Anonymous (2006). Nigeria Demographic and Health Survey. NPC, Abuja.
- Bakonyi G., Nagy P. & Imre K. 2003. Long-term effects of heavy metals and microelements on nematode assemblage. *Toxicology letters* 140, 391-401.
- Beyrem H., Louati H., Essid N., Aïssa P. & Mahmoudi E. 2010. Effects of two lubricant oils on marine nematode assemblages in a laboratory microcosm experiment. *Marine Environmental Research* 69, 248-253. <https://doi.org/10.1016/j.marenvres.2009.10.018>
- Beyrem H., Mahmoudi E., Essid N., Hedfi A., Boufahja F. & Aïssa P. 2007. Individual and combined effects of cadmium and diesel on a nematode community in a laboratory microcosm experiment. *Ecotoxicology and Environmental Safety* 68(3), 412-418.
- Bileva T., Stefanova V. & Haytova D. 2013. Assessment of nematodes as indicators of soil health in agroecosystems. *Turkish Journal of Agricultural and Natural Sciences* 1, 569-573.
- Bongers T. 1990. The maturity index: An ecological measure of environmental disturbance based on nematode species composition. *Oecologia* 83, 14-19. <https://doi.org/10.1007/BF00324627>
- Bongers T., Llieva-Makulec K. & Ekschmitt K. 2001. Acute sensitivity of nematode taxa to CuSO₄ and relationships with feeding type and life-history classification. *Environmental Toxicology and Chemistry* 20, 1511-1516.
- Bongers T.. 1998. Functional diversity of nematodes. *Applied Soil Ecology* 10, 239-251. [https://doi.org/10.1016/S0929-1393\(98\)00123-1](https://doi.org/10.1016/S0929-1393(98)00123-1)
- Bongers T. & Ferris H. 1999. Nematode community structure as a bioindicator in environmental monitoring. *Trends in Ecology & Evolution* 14(6), 224–228. [https://doi.org/10.1016/s0169-5347\(98\)01583-3](https://doi.org/10.1016/s0169-5347(98)01583-3)
- Briar S.S., Barker C., Tenuta M. & Entz M.H. 2012. Soil nematode responses to crop management and conversion to native grasses. *Journal of Nematology* 44(3), 245-254.
- Brussaard L., Behan Pelletier V.M., Bignell D.E., Brown V.K., Didden W., Folgarait P. & Fragoso C. 1997. Biodiversity and ecosystem functioning in soil. *AMBIO* 26(8), 563-570.
- Caldwell B. 2005. Enzyme activities as a component of soil biodiversity: A review. *Pedobiologia* 49, 637-644. <https://doi.org/10.1016/j.pedobi.2005.06.003>
- Cappuyns V., Swennen R. & Verhulst J. 2004. Assessment of acid neutralizing capacity and potential mobilisation of trace metals from land-disposed Dredged sediments. *Science of the Total Environment* 333, 233-247.
- Chauvin C., Trambolho M., Hedde M., Makowski D., C  r  monie H., Jimenez A. & Villenave C. 2020. Soil nematodes as indicators of heavy metal pollution: A meta-analysis. *Open Journal of Soil Science* 10, 579-601.
- Chu H., Sun H., Tripathi B.M., Adams J.M., Huang R., Zhang Y. & Shi Y.U. 2016. Bacterial community dissimilarity between the surface and subsurface soils equals horizontal differences over several kilometers in the western Tibetan Plateau. *Environmental Microbiology* 18 (5), 1523–1533. <https://doi.org/10.1111/1462-2920.13236>
- Chukwumati J.A. & Asiegbu G. C. 2023. Accumulation of hydrocarbons and some heavy metal contents on sediments and plants from crude oil polluted mangrove ecosystem in Okrika, Nigeria. *World Journal of Advanced Research and Reviews* 17(03), 298-306. <https://doi.org/10.30574/wjarr.2023.17.3.0999>
- Clemente R., Walker D.J., Roig, A.B. & Bernal M.P. 2003. Heavy metal bioavailability in a soil affected

Acknowledgements

The authors are grateful to the community leaders of Ogoloma, Okerekana, Abam and Okari.

Conflict of interest

The authors declare that there is no conflict of interests regarding the publication of this article.

- by mineral sulphides contamination following the mine spillage at Aznalcóllar (Spain). *Biodegradation* 14, 199-205. <https://doi.org/10.1023/A:1024288505979>
- Cortet J., Gomot-De Vaufleury A., Poinsoy Balaguer N., Gomot L., Texier C. & Cluzeau D. 1999. The Use of invertebrate soil fauna in monitoring pollutant effects. *European Journal of Soil Biology* 35, 115-134. [https://doi.org/10.1016/S1164-5563\(00\)00116-3](https://doi.org/10.1016/S1164-5563(00)00116-3)
- Edwards C.A. 2002. Assessing the effects of environmental pollutants on soil organisms, Communities, processes and ecosystems. *European Journal of Soil Biology* 38, 225-231. [https://doi.org/10.1016/S1164-5563\(02\)01150-0](https://doi.org/10.1016/S1164-5563(02)01150-0)
- Ferris H. 2010. Form and function: Metabolic footprints of nematodes in the soil food web. *European Journal of Soil Biology* 46, 97-104. <https://doi.org/10.1016/j.ejsobi.2010.01.003>
- Ferris H. & Bongers T. 2006. Nematode indicators of Organic Enrichment. *Journal of Nematology* 38, 3-12.
- Ferris H. & Matute M.M. 2003. Structural and functional succession in the nematode fauna of a soil food web. *Applied Soil Ecology* 23, 93-110.
- Georgieva S.S., McGrath S.P., Hooper D.J. & Chambers B.S. 2002. Nematode communities under stress: The long-term effects of heavy metals in soil treated with sewage sludge. *Applied Soil Ecology* 20, 27-42. [https://doi.org/10.1016/S0929-1393\(02\)00005-7](https://doi.org/10.1016/S0929-1393(02)00005-7)
- Hooper D. J., Hallmann J. & Subbotin S. A. 2005. Methods for extraction, processing and detection of plant and soil nematodes. In Luc M., Sikora R.A. & Bridge J. (Ed.), *Plant parasitic nematodes in subtropical and tropical agriculture* (pp. 53-86). Wallingford CABI Publishing.
- Hu C., Pen-Mouratov S. & Steinberger Y. 2020. Vertical distribution of soil free-living nematode community inhabitants in a Playa area of the northwestern Negev desert, Israel. *Journal of Nematology* 57, 361-375.
- Kandeler F., Kampichler C. & Horak O. 1996. Influence of heavy metals on the functional diversity of soil microbial communities. *Biology and Fertility of Soils* 23, 299-306. <https://doi.org/10.1007/BF00335958>
- Kleynhans, K.P.N. 1997. Collecting and preserving nematodes: A manual for a practical course in nematology. *Plant Protection Research Institute Handbook* No. 16, 52 p.
- Komulainen M. & Mikola J. 1993. Soil processes as influenced by heavy metals and the composition of soil fauna. *Journal of Applied Ecology* 32, 234-241. <https://doi.org/10.2307/2404432>
- Li Q., Jiang, Y. & Liang W.J. 2006. Effects of heavy metals on soil nematode communities in the vicinity of metallurgical factory. *Journal of Environmental Sciences* 18, 323-328.
- Lindgren J.F., Hassellöv I.M. & Dahllöf I. 2012. Meiofaunal and bacterial community response to diesel additions in a microcosm study. *Marine Pollution Bulletin* 64(3), 595 -601.
- Liu J., Zhao W., He H., Kou Y. & Liu Q. 2022. Variations in the community patterns of soil nematodes at different soil depths across successional stages of subalpine forests. *Ecological Indicators* 13, 108624. <https://doi.org/10.1016/j.ecolind.2022.108624>
- Liu T., Yu L., Xu J., Yan X., Li H., Whalen J.K. & Hu F. 2017. Bacterial traits and quality contribute to the diet choice and survival of bacterial-feeding nematodes. *Soil Biology and Biochemistry* 115, 467-474. <https://doi.org/10.1016/j.soilbio.2017.09.014>
- Lv Y., Zhang W., Gao Y., Ning S. & Yang B. 2011. Preliminary study on responses of marine nematode community to crude oil contamination in intertidal zone of Bathing Beach, Dalian. *Marine Pollution Bulletin* 62, 2700-2706.
- McSorley R. 2003. Adaptations of nematodes to environmental extremes. *Florida Entomologist* 86(2), 138-142.
- Mitchell A. E. & Kangas P. 2018. Soil layer development and biota in bioretention. *Water* 10(11), 1578. <https://doi.org/10.3390/w10111587>
- Moura G.S. & Franzener G. 2017. Biodiversity of nematodes biological indicators of soil quality in the agroecosystems. *Arquivos do Instituto Biológico* 84, 1-8. doi.org/10.1590/1808-1657000142015
- Neher D.A. 2001a. Nematode communities as ecological indicators of agroecosystem health. In Gliessman S.R. (Ed), *Agroecosystem sustainability: Developing practical strategies* (pp. 105-120). Boca Raton CRC/Lewis Press.
- Neher D.A. 2001b. Role of nematodes in soil health and their use as indicators. *Journal of Nematology* 33, 161-168.
- Nzeako S.O., Talwana H., Teye E., Sekanjako I., Nabweteme J. & Businge M. A. 2019. Characterization of the soil nematode fauna of Makerere hill, Kampala, Uganda. *Journal of Entomology and Nematology* 11(6), 70-84. doi.org/10.5897/JEN2019.0239
- Nzeako S.O., Imafidor H.O. & Ihenacho P.C. 2011. Effect of crude oil spillage on soil nematodes community composition in a polluted site in Gokana Local Government Area of Rivers State, Nigeria. *Bioscience Research Journal* 23 (3), 141-145.

- Osarokaka A.J., Nzeako S. O., Imafidor H. O. & Living-Jamala U. 2021. Soil nematodes status of crude oil polluted sites in Bodo community, Gokana Local Government Area, Rivers State, Nigeria. *African Journal of Environmental Science and Science and Technology* 15(2), 85-97.
- Pen-Mouratov S., He X. & Steinberger Y. 2004. Spatial distribution and trophic diversity of nematode populations under *Acacia raddiana* along a temperature gradient in the Negev desert ecosystem. *Journal of Arid Environments* 56, 339-355. doi.org/10.1016/S0140-1963(03)00058-2
- Pen-Mouratov S., Hu C., Hindin E. & Steinberger Y. 2011. Soil microbial activity and a free-living nematode community in the playa and in the sandy biological crust of the Negev desert. *Biology and Fertility of Soils* 47, 363 – 375. doi.org/10.1007/s00374-011-0540-x
- Pen-Mouratov S., Shukurov N. & Steinberg C. 2008. Influence of industrial heavy metal pollution on soil free-living nematode population. *Environmental Pollution* 152, 172-183. doi.org/10.1016/j.envpol.2007.05.007
- Rodriguez-Martín J.A., Gutiérrez C., Escuer M., García-González M.T., Campos-Herrera R. & Águila N. 2014. Effect of mine tailing on the spatial variability of soil nematodes from lead pollution in La Union (Spain). *Science of the Total Environment* 473 (474), 518-529. doi.org/10.1016/j.scitotenv.2013.12.075
- Rovedder A.P., Antonioli Z.I., Spagnollo E. & Venturini S. 2004. Fauna edáfica em solo susceptível à arenização na região sudoeste do Rio Grande do Sul. *Revista de Ciências Agroveterinárias Lages* 3(2), 87-96.
- Salamun P., Renco M., Kucanova E., Brazova T., Papajova I., Miklisova D. & Hanzelova V. 2012. Nematodes as bioindicators of soil degradation due to heavy metals. *Ecotoxicology* 21, 2319-2330. doi.org/10.1007/s10646-012-0988-y
- Sanchez M.S. & Navas A. 2007. Nematode diversity and food web condition in heavy metal polluted soils in a river basin in Southern Spain. *European Journal of Soil Biology* 43, 166-179. doi.org/10.1016/j.ejsobi.2007.01.002
- Savin C.M., Wolf D.C., Davies K.J., Gbur E.E. & Thoma G.J. 2015. Nematodes as bioindicators of ecosystem recovery during phytoremediation off crude oil contaminated soil. *International Journal of Phytoremediation* 17(2), 182-190.
- Shukurov N., Pen-Mouratov S. & Steinberger Y. 2005. The impact of Almalayk industrial complex on soil chemical and biological properties. *Environmental Pollution* 136, 331-340. https://doi.org/10.1016/j.envpol.2004.12.007
- Stringer T.J., Glover C.N., Keesing V., Northcott G.L. & Trembla L. 2012. Development of a harpacticoid copepod bioassay: Selection of species and relative sensitivity to zinc, atrazine and phenanthrene. *Ecotoxicology and Environmental Safety* 80, 363-371.
- Thuo A.K., Karuku G.N., Kimenju J.W., G.M. Kariuki G.M., Wendot P.K. & Melakeberhan H. 2020. Seasonal variation of nematode assemblages and diversity on selected soil groups in Kenya: Vertisols, Cambisols and Arenosols. *Tropical and Subtropical Agroecosystems* 23 (63), 1-16.
- Veldkornet D., Rajkaran A., Paul S. & Naidoo G. 2020. Oil induces chlorophyll deficient propagules in mangroves. *Marine Pollution Bulletin* 150. doi: 10.1016/j.marpolbul.2019.110667
- Visser S. & Parkinson D. 1992. Soil biological criteria as indicators of soil quality: Soil microorganisms. *American Journal of Alternative Agriculture* 7, 3-37.
- Wagg C., Franz B.S., Widmer F. & van der Heijden M.G.A. 2014. Soil biodiversity and soil community composition determine ecosystem multifunctionality. *Proceedings of the National Academy of Sciences of the United States of America* 111, 5266-5270. doi.org/10.1073/pnas.1320054111
- Wang Y., Chen H. & Wu J. 2009. Influence of chronic contamination of oil field exploitation on soil nematode communities at the Yellow Delta of China. *Frontier of Biology China* 4, 376-383.
- Wei C., Zheng H., Li Q., Lu X. & Yu Q. 2012. Nitrogen addition regulates soil nematode community composition through ammonium suppression. *PLoS One* 7. doi.org/10.1371/journal.pone.0043384
- Weil R.R. & Magdoff F. 2004. Significance of soil organic matter to soil quality and health. In: Magdoff, F. & Weil, R.R (Eds.), *Soil organic matter in sustainable agriculture* (pp. 1-43). Florida CRC Press.
- Yeates G.W., Bongers T., de Goede R.G.M., Freckman D.W. & Georgieva S.S. 1993. Feeding habits in soil nematode families and genera-an outline for soil ecologists. *Journal of Nematology* 25, 315-331.
- Zhang M., Liang W.J., & Zhang X.K. 2012. Soil nematode abundance and diversity in different forest types at Changbai mountain, China. *Zoological Studies* 51(5), 619-626.
- Zhang X.K., Liang W.J., Jiang D.M., Liu Z.M. & Jiang S.W. 2007. Soil nematode community structure in a Chinese sand dune system. *Helminthologia* 44, 204-209. doi.org/10.2478/s11687-007- 0032-6